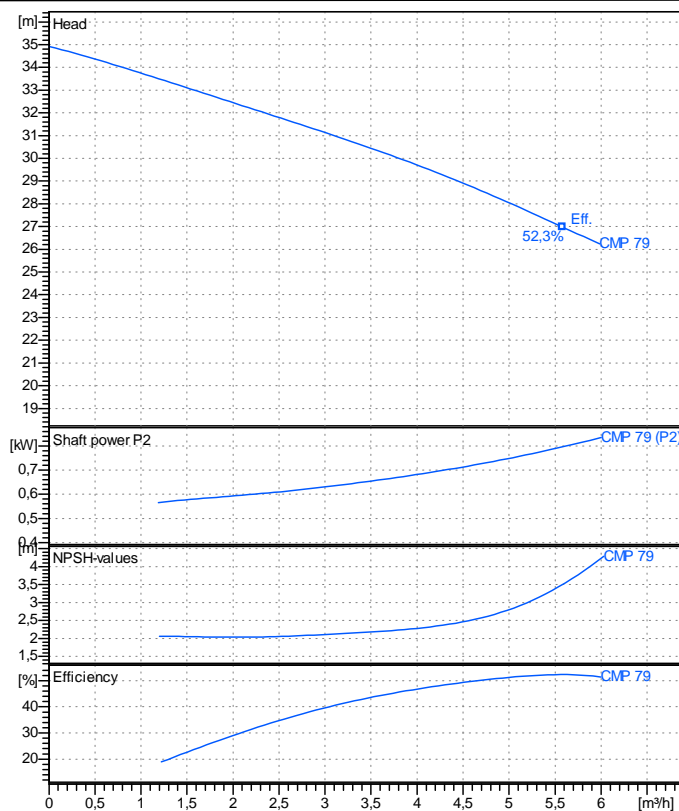


Receiver

From

Company name
Respons. Department
Person in charge
Phone number
Fax no
E-mail address



Operating data specification

Nominal flow	m³/h	0
Nominal head	m	0
Static head	m	0
NPSH - v value of plant	m	0
Inlet pressure	bar	0,09793
Fluid	Water, pure	
Operating temperature t A	°C	20
Density at t A	kg/m³	998,3
Kin. viscosity at t A	mm²/s	1.005

Pump

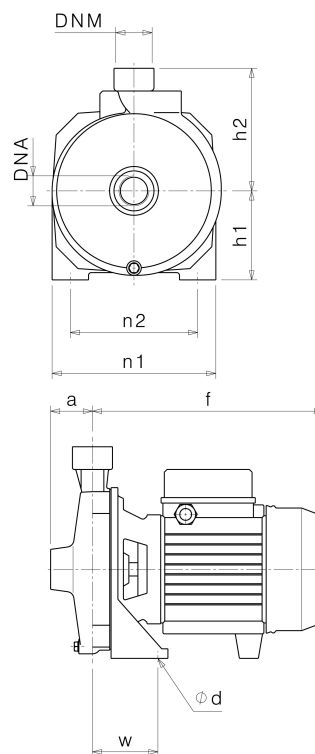
Pump name		CMP 79	
Size			
Design			
Speed rpm	2850	No of stages	1
Impeller type	Single vane impeller		
Flow	Nominal	m³/h	
	Max-	m³/h	5,99
	Min-	m³/h	0
Head	Nominal	m	
	Max-	m	34,9
	Min-	m	26,2
Head H(Q=0)		m	34,9
NPSH 3%		m	
Max. working pressure		bar	3,42
Shaft power		kW	
Efficiency		%	
Max absorbed power		kW	0,83506

Materials Pump

Shaft		Stainless steel AISI 420 (1.4028)		
Impeller		Thermoplastic resin		
Pump body		Cast iron EN-GJL-200		
Support		Aluminium		
OR		NBR Rubber		
Mechanical seal		BXPg (Gra/Cer/NBR)		
Motor		Frame size	80	
Manufacturer / Type		SAER 80 2 - 0,75 3~		
Rated power	kW	0,75	Efficiency 4/4	0 %
Electric current	A	2,8 A	Speed	rpm 2950
Electric voltage	V	400 V	3~	Hz 50
Starting mode		Unknown		
Degree of protection		IP 44	Insulation class	F

Dimensions in mm

a	46
DNA	G 1"
DNM	G 1"
f	254
h1	98
h2	135
n1	180
n2	140
od	9
w	72



Remarks:

Project	Project ID	Created by	Created on 2019-02-13	Last update
---------	------------	------------	---------------------------------	-------------